



Pensions  
Management  
Institute

Training

# Trustee Training Directory 2022

---

# Introduction

## The Need for Trustee Training

The pressures on trustees to ensure that they are fully prepared for their role are greater than ever. From the initial appointment, trustees are required to undergo training within six months and every two years thereafter.

As the professional institute for the sector, the PMI is constantly developing services and resources to assist trustees in their training and education journey.

This must-have Trustee Training Directory has been compiled in association with some other reputable training providers in the sector to support trustees with their training requirements. The courses listed in this document are suitable for new trustees and those looking to refresh their knowledge including legal, regulatory, investment and scheme-specific knowledge.

We hope you find all the support you need for your training in this document. Please get in touch if you wish to see other topics or training sessions listed here.





CLIENT / OPTIONS



# Barnett Waddingham

---

Proud to be a leading independent UK consultancy at the forefront of risk, pensions, investment and insurance. We're a team of over 1,400 people across 9 offices.

## **Course(s) offered:**

### **Trustee training**

Our comprehensive training programme effectively guides trustees through the fundamental issues highlighted in The Pensions Regulator's 'Scope Guidance'.

This programme is Pensions Management Institute (PMI) accredited and targeted specifically for trustees of defined benefit (DB) pension schemes.

The course provides both new trustees and those seeking a reminder with a thorough grounding in pensions matters - and the knowledge to complete The Pensions Regulator's Trustee Toolkit with confidence.

### **Topics covered include:**

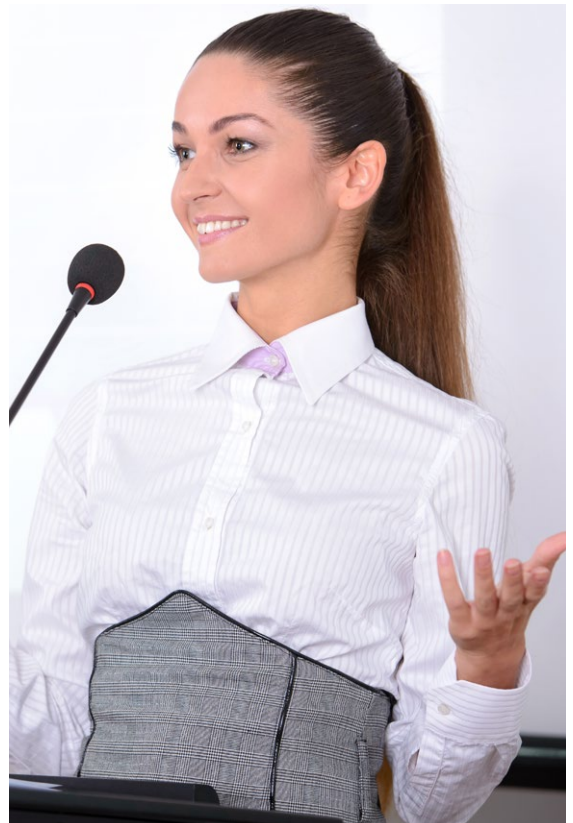
- The 'trustee knowledge and understanding' requirements
- The UK current pensions landscape and key regulatory changes
- An introduction to asset classes, funding strategy and investment principles
- The scheme funding regime, including The Pensions Regulator's DB funding code of practice

### **Timings:**

Three online modules held over three mornings.

### **Frequency:**

Regularly throughout the year - see website for details. DC Training is also available.



# EVERSHEDS SUTHERLAND

**Contact details:**  
One Wood Street,  
London, EC2V 7WS

**Contact names:**  
Catherine Salafia  
Karen Mumgaard

**Telephone number:**  
+44 20 7919 4896  
+44 20 7919 0745

**Email:**  
catherinesalafia@eversheds-  
sutherland.com  
karenmumgaard@eversheds-  
sutherland.com.

**Website:**  
[www.eversheds-sutherland.com/  
training](http://www.eversheds-sutherland.com/training)  
Search under subject area "Pensions"

## Eversheds Sutherland

---

Eversheds Sutherland is an international law firm, with a market-leading team of UK pension lawyers.

### **Course(s) offered:**

Our online PMI Award in Pension Trusteeship (CPT unit 1) training programme is designed to draw on our long experience of successfully helping trustees to prepare for the exam through face to face training sessions. It uses pre-recorded modules to cover the core elements of the syllabus. This unique programme also includes two live, interactive sessions to encourage Q&A discussion. This programme is available to individual or groups of trustees. It is aimed at experienced trustees and is not suited to those who are new to pensions.

In addition, we provide regular legal update briefings and can organise bespoke or in-house training at a time and location to suit your needs.





**Used to move with  
the tide, and against it**



**Knows when to invest with  
the market, and against it**

## **Our rigorous research helps us act with conviction**

At T. Rowe Price, the conviction behind our investment decisions helps us deliver reliable outcomes. Every investment we make is informed by our own independent research and prudent risk management. Guiding what we invest in, and what we don't—and helping us focus on long-term objectives while avoiding short-term distractions. We call our approach strategic investing. It's supported us in our aim to make better decisions to consistently deliver for investors since 1937.

[Explore the benefits of conviction-led investing at \[troweprice.co.uk/hello\]\(https://troweprice.co.uk/hello\)](https://troweprice.co.uk/hello)

**Capital at risk. For professional clients only. Not for further distribution.**

### **Important Information.**

**The value of an investment and any income from it can go down as well as up. Investors may get back less than the amount invested.**

This material is issued and approved by T. Rowe Price International Ltd, 60 Queen Victoria Street, London, EC4N 4TZ which is authorised and regulated by the UK Financial Conduct Authority. For Professional Clients only. © 2022 T. Rowe Price. All rights reserved. T. ROWE PRICE, INVEST WITH CONFIDENCE, and the Bighorn Sheep design are, collectively and/or apart, trademarks of T. Rowe Price Group, Inc. ID: 2109323



# Training to help achieve your goals

Insight's training programme is designed to help you understand the key challenges facing pension schemes and empower you to make informed decisions.

Modules range from market basics through to advanced strategies, such as:

- Understand your liabilities and the different ways to hedge risk
- How to incorporate responsible investment across your scheme
- The implications of longevity risk and how to hedge it

You can sign up to attend our training events which are held throughout the year, or access over 1,000 CPD minutes online.

Our training programme is accredited by the Pensions Management Institute and CPD UK.

## Find out more

<https://www.insightinvestment.com/uk/institutional-investors/tools-and-resources/training/>

<https://www.insightinvestment.com/uk/institutional-investors/on-line-training-hub/uk-online-training-learning-hub/>

+44 20 7321 1023



**Pensions  
Management  
Institute**

Accredited



Issued by Insight Investment Management (Global) Limited. Registered in England and Wales. Registered office 160 Queen Victoria Street, London EC4V 4LA; registered number 00827982. Authorised and regulated by the Financial Conduct Authority.

# Gowling WLG

---

Gowling WLG is an international, full-service law firm with a leading UK pension practice comprising over 50 pensions specialists.

## **Courses offered:**

We offer a range of training programmes which can be adapted to meet your particular requirements. Courses are led by senior pensions lawyers with wide-ranging, practical experience, and are fully interactive to promote exchange of ideas. We can tailor the content to suit defined benefit, defined contribution or hybrid schemes.

## **Basic trusteeship**

A half-day course designed to cover the Regulator's Trustee Knowledge and Understanding (TKU) Scope Guidance and to align with the legal modules for the Regulator's Trustee Toolkit. This course will equip delegates to complete the Toolkit and satisfy the TKU requirements.

Also suitable for non-trustees who want to understand how pension trustees operate, e.g. pensions managers or individuals responsible for pension benefits and funding on behalf of an employer.

## **Advanced trusteeship**

A one-day course for those seeking to achieve the PMI Level 3 Award in Pension Trusteeship or any equivalent accreditation, including professional trustees. Also useful for any trustees looking to deepen their understanding of their role.

## **Continuing professional development**

We offer training on emerging legal issues to enable trustees to keep up-to-date. We can help you to develop an annual training programme and assist with access to training from other providers with different specialist backgrounds.

## **Bespoke Training Sessions**

Many clients want to devise training for their trustees that reflects the specific features of their scheme and context. We have considerable experience in developing one-off sessions or programmes to suit your needs, in particular linking in to the specific powers and legal provisions of your scheme rules.

## **Frequency:**

On request.





**Contact details:**  
160 Queen Victoria Street,  
London, EC4V 4LA

**Contact name:**  
Amy Taylor

**Telephone number:**  
+44 20 7163 4000

**Email:**  
[traininghub@insightinvestment.com](mailto:traininghub@insightinvestment.com)

**Website:**  
[www.insightinvestment.com/  
training-opportunities](http://www.insightinvestment.com/training-opportunities)

# Insight Investment

---

## Live training sessions

Insight's training programme is designed to enable trustees to understand the key challenges facing pension schemes and empower them to make informed decisions.

Topics range from explaining the basic investment toolkit to discussions on new developments which affect pension scheme outcomes.

### Example topics:

- Understanding liabilities and the different ways to hedge liability risk
- The implications of negative interest rates
- Responsible investment in liability-driven investment and fixed income
- Proposed revisions to the DB Funding Code and its investment implications
- The implications of longevity risk and how to hedge it

### Frequency:

Live training session three times a year

### Location:

London (and online)

## Online training

Alternatively, access our training hub which hosts over 1,000 minutes of content accredited by CPD UK and the Pensions Management Institute at a time that suits you.

### Benefits:

- Keep track of your completed CPD training through the new training history function
- Access to investment training spanning two years, covering more than 30 modules
- Identify relevant content more easily by filtering through an array of topics: credit, LDI, macro, multi-asset and responsible investment

## Bespoke training sessions

Available upon request.

See our website for details of our [live events](#) and access to our online [training portal](#).



## The Occupational Pensions Defence Union (OPDU)

---

We offer training and roundtable presentations for trustees, advisers, consultants or Boards for groups of at least 6 people, and can speak at larger events such as seminars and conferences

### Course(s) offered:

Our training comprises of a technical training seminar and we cover:

- The exoneration and indemnity clauses and how these work and their limitations;
- How insurance works as part of an integrated risk management strategy;
- Technical details of insurance including scope and breadth of cover offered and how each element works;
- Tips regarding what to watch out for in a good policy;
- Recent developments such as GMP equalisation;
- Anonymised claims examples.

The seminar is led by Martin Kellaway who is OPDU's Executive Director and an independent trustee chair of a DB scheme and accredited independent trustee by the Pensions Management Institute.

Seminar can be carried out either in person or via the internet.



# Sackers

---

Sackers is the UK's leading specialist law firm for pension scheme trustees, employers, corporate investors and providers. Our entire focus is on advising the pensions and retirement savings industry.

## Course(s) offered:

We offer a wide range of training sessions, suitable for new trustees and those who want to refresh their knowledge. Led by senior lawyers who draw on their experience of advising over 400 occupational pension schemes of all sizes and structures, the in-person and online sessions are practical and engaging. All the courses are free and provide opportunities to learn, ask questions and share ideas on best practice.

## Quarterly Legal Updates

Our Quarterly Legal Updates provide an essential overview of significant legal and regulatory developments affecting occupational pension provision in the UK.

## Pensions for new trustees

These in-person sessions focus on the key legal issues for new trustees of DB, DC and hybrid schemes. They are held twice a year and the day is divided into three parts: an overview session on the current legal and regulatory framework and how this impacts the role and responsibilities of trustees; a DB session on the scheme funding regime, covenant issues, ESG factors and endgame planning; and a DC session on investment, retirement choices and member communications.

## Hot topics

Hot topic sessions on key developments such as the Pensions Dashboard, climate change requirements, TPR's new powers and GMP Equalisation.

## "How to" sessions

"How to" sessions on preparing for risk transfer transactions, dealing with member cases and getting to grips with the new transfer regime.

## Bespoke courses

Bespoke courses tailored to your requirements.

See [www.sackers.com/events/](http://www.sackers.com/events/) for upcoming dates.

We also have plenty of material available for new trustees in the form of podcasts, videos and all of our previous webinar recordings on our website: [www.sackers.com/knowledge/multimedia](http://www.sackers.com/knowledge/multimedia).

## Frequency:

Throughout the year

# Squire Patton Boggs

---

Squire Patton Boggs is a full-service global law firm. Our top ranked, [award winning pensions team](#) provides legal advice from across its UK offices in London, Birmingham, Leeds and Manchester.

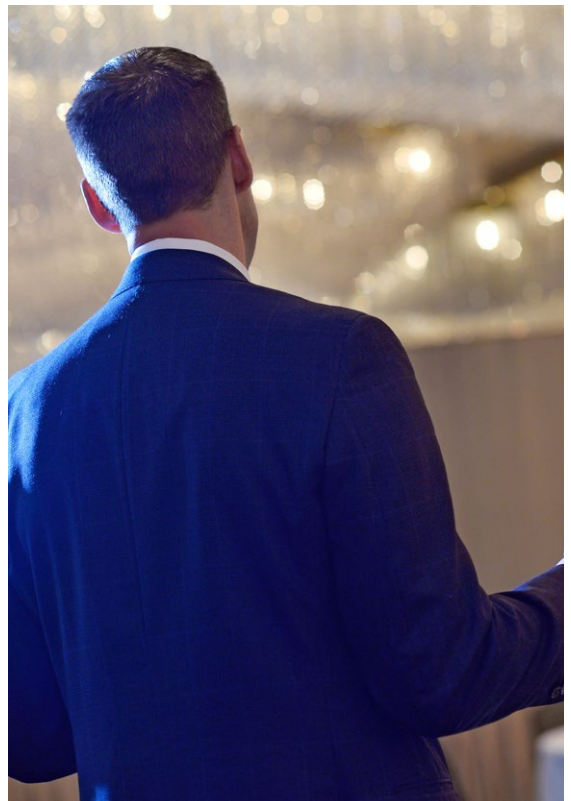
## Course(s) offered:

Our pensions team has won a number of key industry awards in recent years for its educational and communications initiatives.

We offer comprehensive trustee training on a wide range of matters, communicating complex issues in an understandable and engaging way. Our imaginative and interactive sessions stimulate audience participation and understanding, including formats such as case studies, role-plays and quizzes. Our deep industry insights span both legal and trustee perspectives, derived from our experience of offering professional trusteeship services.

Please visit our [Pensions Thought Leadership Library](#) to access our publications, including materials from recent UK Pensions campaigns such as #How2DoPensions quick guides, #meetPAUL risk management campaign and #PensionsTensions long-term stresses and strains campaign.

- Bespoke courses on any legal issues relating to occupational pension schemes
- Hot topics sessions
- Scheme conversance training
- Revision and exam training sessions for PMI Award in Pension Trusteeship
- Joint sessions with other advisers



# T. Rowe Price

---

At T. Rowe Price we are solely focused on providing investment management and long-term results for you and your clients.

Founded in 1937, we're an independent investment management firm managing over GBP 1.1 trillion in assets\*. We service clients in 53 countries across Europe, the Americas, Asia and the Middle East and opened our UK office in 1979, going on to launch our OEIC Fund Range in 2016.

We offer investors a full range of equity and fixed income strategies across multiple asset classes, sectors, styles, and regions. Our experience through all types of market conditions contributes to a proven investment strategy designed to produce strong performance for the long term.

## Course(s) offered:

### **Fixed Income: Back to basics**

T. Rowe Price recently celebrated fifty years of experience as fixed income investors, having managed income assets since 1971. Fundamental research sits at the heart of everything we do and we truly believe we have the skills to equip you with an information edge.

The main focus of our training is to provide you with a better understanding of fixed income instruments and markets. Fixed income remains the world's biggest and most complex market and our aim is to help you navigate this asset class with confidence and clarity.

In our first training session in March, we went back to basics - explaining how fixed income securities work and how they can fit into your portfolio.

Join us this year on the 14th September for a deeper dive into the world of fixed income and gain insights into how and why it should be considered in all investment decisions.

For questions or queries on further training from T. Rowe Price, please do not hesitate to get in touch.

# Accreditation for Professional Trustees

---

## Building credibility and raising governance standards across the pensions industry

Developed by the Pensions Management Institute, the Aptitude programme was formed following standards published by the Professional Trustee Standards Working Group (PTSWG) in 2019 to raise standards and provide assurance about the quality of professional trustees and discourage poor practices in the industry.

Professional trustees play an important role in pensions and should have a greater level of expertise and knowledge to meet a higher standard of care in comparison to other trustees.

For more information and how to register, please visit [www.pmitap.org](http://www.pmitap.org)





# Additional Information

---

## PMI APT private sitting

If you would like to hold a private sitting, please contact James Cumine at [jcumine@pensions-pmi.org.uk](mailto:jcumine@pensions-pmi.org.uk) to enquire about availability. Private sittings can hold no less than 10 individuals and at least 4 weeks' notice must be given so that we can try and hold the exam on your chosen date.

**Telephone:**

020 7392 7400

## Join our Trustee Group today

Trustee Group membership is available on either an individual or board basis and offers support and benefits to help Trustee meet TKU requirements.

**Telephone:**

020 7392 7410

**Email:**

[membership@pensions-pmi.org.uk](mailto:membership@pensions-pmi.org.uk)

## Contact Us

**If you would like to be featured in this directory please get in touch.**

Devonshire House  
60 Goswell Road  
London  
EC1M 7AD

**Telephone:**

+44 (0) 20 7247 1452

**Email:**

[marketing@pensions-pmi.org.uk](mailto:marketing@pensions-pmi.org.uk)



**Pensions  
Management  
Institute**

Moving pensions forward